



ST02	A45-B	C	
-------------	--------------	----------	--

GVS 900 V (1 Vpp)

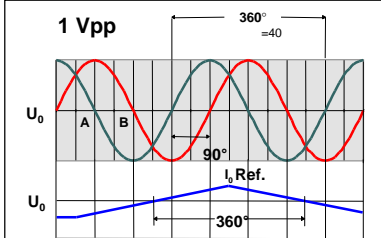


- ()
- (30040)
-
-
- 0.1 ± 5
-
-
- 50
- Zero Magneto Set.
- ()
-
-

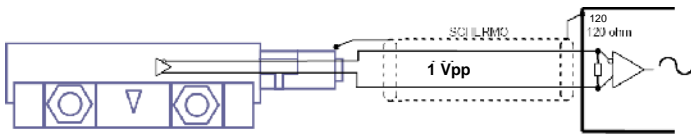
		Cod. GVS 900	V
50x58.5			40  P 10.6 x 10 ⁻⁶ °C ⁻¹
		(I₀)	C = P = (50) E = (50)
			0.1 *
			± 5 **
		ML	640 30040 200 *** : 1200, 1400, 1600, 1800, 2000
			120 /
			30 / ²
			≤ 15 N
		(EN 60068-2-6)	≤ 100 / ² [55 + 2000]
		(EN 60068-2-27)	≤ 300 / ² [11 ms]
		(EN 60529)	IP 53 IP 64
			0 °C + 50 °C
			-20 °C + 70 °C
			20% + 80% ()
			⊙
			5 Vdc ± 5%
			160 mA _{MAX} (R = 120 Ω)
		A, B I₀	1 Vpp  40
			45 ****
			1.7 + 3.5 /
	+ V		
	0 V		
	A		
	A		
	B		
	B		
	I ₀		
	I ₀		
	SCH		

* ± X
**

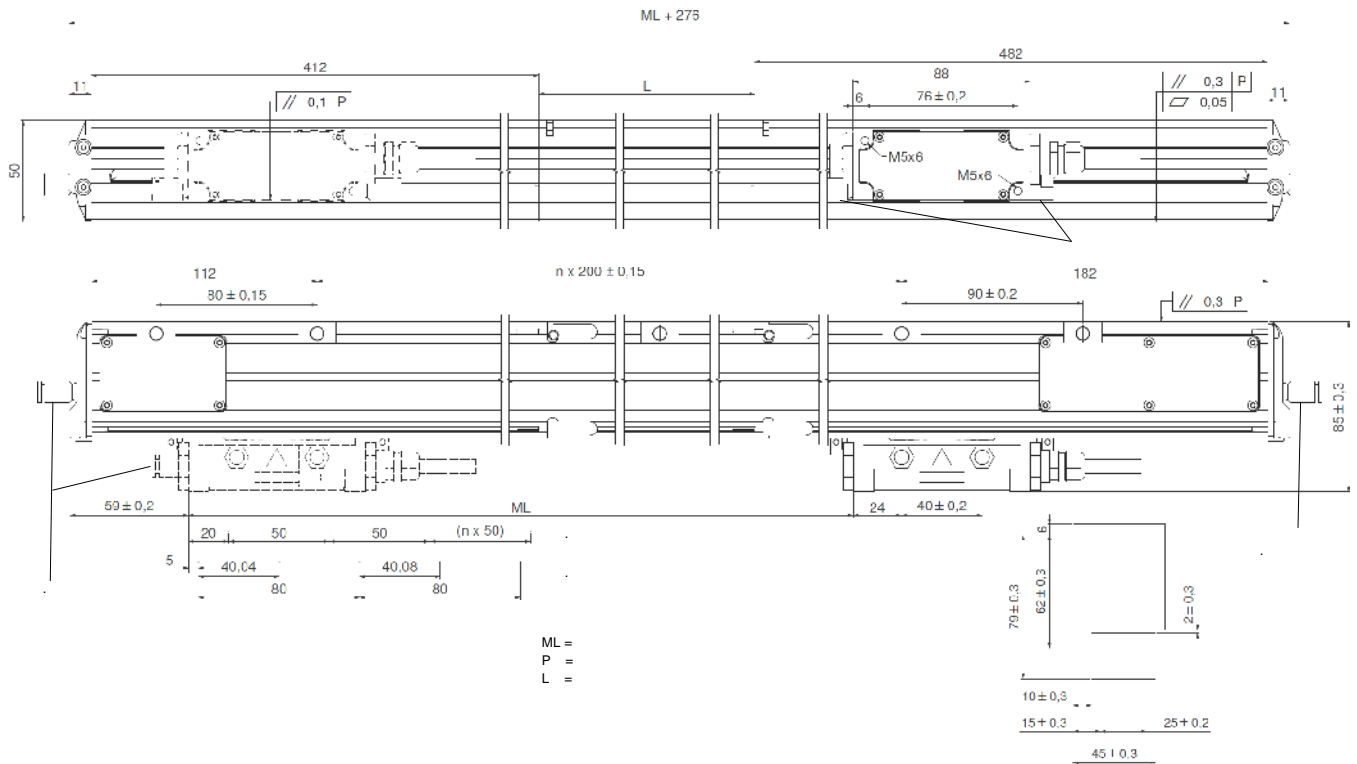
ST02	A45-B		
-------------	--------------	--	--



A B	0.8 Vpp + 1.2 Vpp typical 1 Vpp
I₀	0.25 + 0.8 ()
A B	90° ± 10°
U₀	≈ 2.2
120 ,	5 ± 5%.



-	:
-	5 .



GVS 900	V 40 C	03240	05VS	M04 / S	C35	PR
----------------	---------------	--------------	-------------	----------------	------------	-----------

V = 1Vpp
 40 = 40
 C =
 P =
 E =

03240 = ML
 30040 = ML-MAX

05V = 5
 S =

Mnn =
 M04 = 4 ()
 M10 = 10
 S =
 T = tubeflex

Cnn =
 SC =

No cod. =
 SPnn =
 PR =

nn

GVS 900 V40C 03240 05VS M04/S C35 PR