

<b>ST02</b>	<b>A60-A</b>	<b>C</b>	
-------------	--------------	----------	--

## GVS 908 T - SSI-BiSS INTERFACE

• ( )  
 • ( 30040 )  
 •  
 • SSI-BiSS C ( )  
 • 0.1 ± 5  
 •  
 • ( )  
 • /  
 • 1 Vpp.

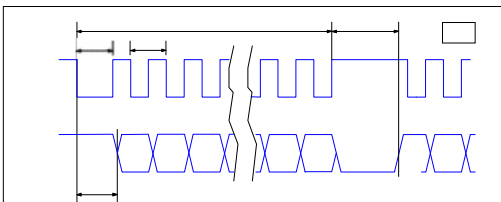


	Cod. GVS 908	T																																																												
50x58.5  A B 1 Vpp 90° SSI-BiSS C ( ) (SSI-BiSS) + - 10- ∅ = 6.2 : 0.35 ²; 0.10 ² - 80 - 6- ∅ = 7.1 : 0.25 ²; 0.25 ² - 70  <table border="1" style="width: 100%; border-collapse: collapse;"> <tr><td style="width: 50%;"></td><td style="width: 50%;"></td></tr> <tr><td style="text-align: center;">+V</td><td></td></tr> <tr><td style="text-align: center;">0V</td><td></td></tr> <tr><td style="text-align: center;">CK</td><td></td></tr> <tr><td style="text-align: center;">CK</td><td></td></tr> <tr><td style="text-align: center;">D</td><td></td></tr> <tr><td style="text-align: center;">D</td><td></td></tr> <tr><td style="text-align: center;">SCH</td><td></td></tr> </table>			+V		0V		CK		CK		D		D		SCH			<table border="1" style="width: 100%; border-collapse: collapse;"> <tr> <td style="text-align: center;">240</td> <td style="text-align: center;"><b>III P</b></td> </tr> <tr> <td colspan="2" style="text-align: center;">10.6 x 10<sup>-6</sup> °C<sup>-1</sup></td> </tr> <tr> <td colspan="2" style="text-align: center;">1 Vpp ( )</td> </tr> <tr> <td style="text-align: center;">1 Vpp</td> <td style="text-align: center;">0.1 *</td> </tr> <tr> <td colspan="2" style="text-align: center;">SSI-BiSS C ( )</td> </tr> <tr> <td colspan="2" style="text-align: center;">1 - 0.1</td> </tr> <tr> <td colspan="2" style="text-align: center;">± 5 **</td> </tr> <tr> <td style="text-align: center;"><b>ML</b></td> <td style="text-align: center;">640 30040 200 : 1200, 1400, 1600, 1800, 2000</td> </tr> <tr> <td colspan="2" style="text-align: center;">120 /</td> </tr> <tr> <td colspan="2" style="text-align: center;">30 / ²</td> </tr> <tr> <td colspan="2" style="text-align: center;">≤ 15 N</td> </tr> <tr> <td colspan="2" style="text-align: center;">(EN 60068-2-6) ≤ 100 / ² [55 + 2000 ]</td> </tr> <tr> <td colspan="2" style="text-align: center;">(EN 60068-2-27) ≤ 300 / ² [11 ms]</td> </tr> <tr> <td colspan="2" style="text-align: center;">(EN 60529) IP 53 IP 64</td> </tr> <tr> <td colspan="2" style="text-align: center;">0 °C + 50 °C</td> </tr> <tr> <td colspan="2" style="text-align: center;">-20 °C + 70 °C</td> </tr> <tr> <td colspan="2" style="text-align: center;">20% + 80% ( )</td> </tr> <tr> <td colspan="2" style="text-align: center;">©</td> </tr> <tr> <td colspan="2" style="text-align: center;">5 Vdc ± 5%</td> </tr> <tr> <td colspan="2" style="text-align: center;">280 mA<sub>MAX</sub> ( R = 120 Ω)</td> </tr> <tr> <td colspan="2" style="text-align: center;">50 ( .+ .), 70 ( .) ***</td> </tr> <tr> <td colspan="2" style="text-align: center;">1.7 + 3.5 /</td> </tr> </table>	240	<b>III P</b>	10.6 x 10 <sup>-6</sup> °C <sup>-1</sup>		1 Vpp ( )		1 Vpp	0.1 *	SSI-BiSS C ( )		1 - 0.1		± 5 **		<b>ML</b>	640 30040 200 : 1200, 1400, 1600, 1800, 2000	120 /		30 / ²		≤ 15 N		(EN 60068-2-6) ≤ 100 / ² [55 + 2000 ]		(EN 60068-2-27) ≤ 300 / ² [11 ms]		(EN 60529) IP 53 IP 64		0 °C + 50 °C		-20 °C + 70 °C		20% + 80% ( )		©		5 Vdc ± 5%		280 mA <sub>MAX</sub> ( R = 120 Ω)		50 ( .+ .), 70 ( .) ***		1.7 + 3.5 /	
+V																																																														
0V																																																														
CK																																																														
CK																																																														
D																																																														
D																																																														
SCH																																																														
240	<b>III P</b>																																																													
10.6 x 10 <sup>-6</sup> °C <sup>-1</sup>																																																														
1 Vpp ( )																																																														
1 Vpp	0.1 *																																																													
SSI-BiSS C ( )																																																														
1 - 0.1																																																														
± 5 **																																																														
<b>ML</b>	640 30040 200 : 1200, 1400, 1600, 1800, 2000																																																													
120 /																																																														
30 / ²																																																														
≤ 15 N																																																														
(EN 60068-2-6) ≤ 100 / ² [55 + 2000 ]																																																														
(EN 60068-2-27) ≤ 300 / ² [11 ms]																																																														
(EN 60529) IP 53 IP 64																																																														
0 °C + 50 °C																																																														
-20 °C + 70 °C																																																														
20% + 80% ( )																																																														
©																																																														
5 Vdc ± 5%																																																														
280 mA <sub>MAX</sub> ( R = 120 Ω)																																																														
50 ( .+ .), 70 ( .) ***																																																														
1.7 + 3.5 /																																																														

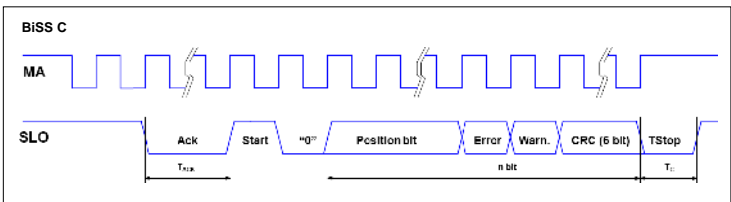
\* ± X  
 \*\* 1  
 \*\*\*

<b>ST02</b>	<b>A60-A</b>	<b>C</b>	
-------------	--------------	----------	--

**SSI** **BiSS C ( )**

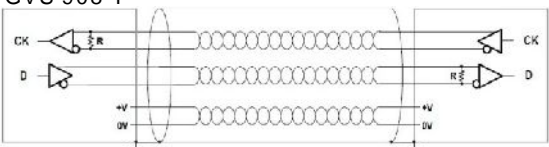


	SSI	-
	EIA RS 422	
	0.1 ± 1.2	
n	30	
T <sub>C</sub>	.22	
T <sub>D</sub>	.6	



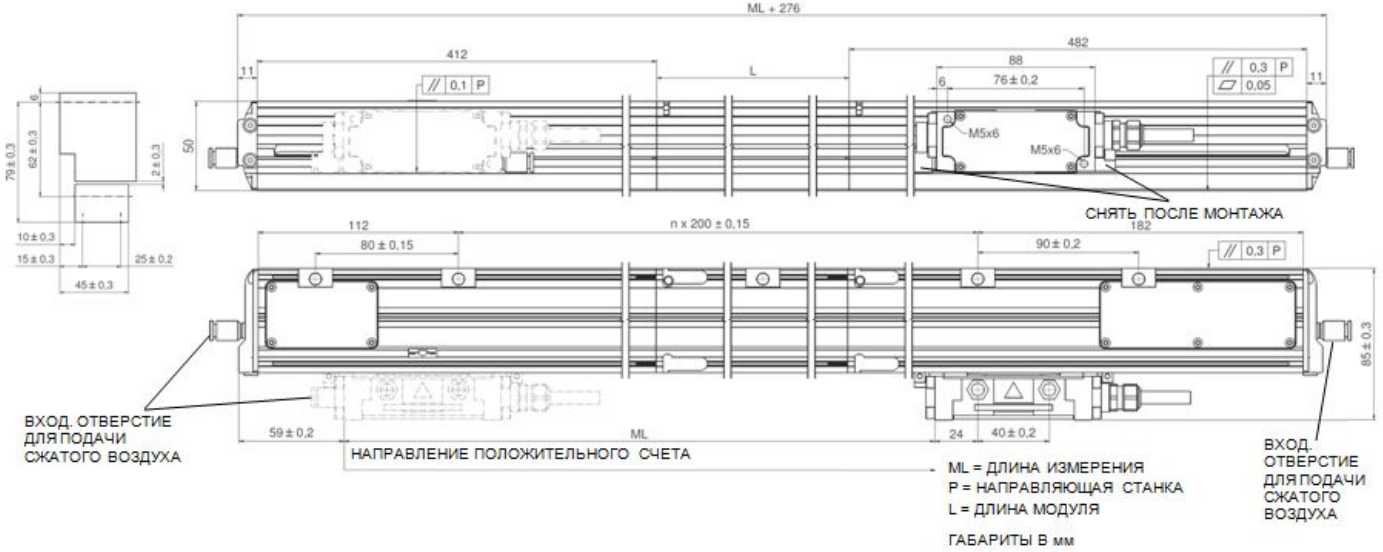
	BiSS C	
	EIA RS 485 / RS 422	
	0.1 ± 8	
n	32 + 2 + 6	
T <sub>C</sub>	5	
T <sub>ACK</sub>	.20	

**GVS 908 T**



-	:	
-	.	5
-	;	

**MECHANICAL DIMENSIONS AND MOUNTING**



<b>GVS 908</b>	<b>T1A</b>	<b>03240</b>	<b>05V</b>	<b>S0</b>	<b>V</b>	<b>M04 / S</b>	<b>CG8</b>	<b>PR</b>
----------------	------------	--------------	------------	-----------	----------	----------------	------------	-----------

1 = 1  
 01 = 0,1  
 =

03240 = ML  
 30040 = ML<sub>MAX</sub>

05V = 5 Vdc

S0 = SSI  
 S1 = SSI  
 S2 = SSI .+  
 S3 = SSI .+  
 S4 = SSI +  
 S5 = SSI +  
 S6 = SSI +  
 S7 = SSI +  
 B1 = BiSS

V = +1 Vpp  
 No cod. =

Mnn =  
 04 = 4  
 10 = 10  
 S =

Cnn =  
 SC =

No cod. =  
 SPnn =  
 PR = nn

**GVS 908 T1A 03240 05V S0 V M04/S CG8 PR**